

EXAMINATION PAPER 2017

Time: 3 hrs.]

[M.M.: 80

General Instructions:

- (i) *This paper consists of 4 sections : A, B, C & D.*
 - (ii) *Attempt all questions.*
 - (iii) *Ensure that questions of each section are answered together.*
 - (iv) *Read each question carefully and follow the given instructions.*
 - (v) *All the answers must be correctly numbered as show in the question paper and should be written in the answersheet provided to you.*
 - (vi) *Strictly adhere to the word limit given with each question. Marks will be deducted for exceeding the word limit.*
 - (vii) *Don't write any thing on the question-paper.*
-

SECTION A [Reading]

20 Marks

1. Read the following passage carefully:

10 Marks

1. As the dreaded examinations crawl to a halt, students look forward to the much awaited “creative outlets”, the summer camps, to let off steam and spend their holidays. A summer camp is conducted over a short period of four to five weeks involving interesting and fun-filled activities. The colourful spectrum of summer camps provides a wide variety of activities which include artistic skills, such as painting, origami, art, music, craft, and also spoken English, cookery and computer courses. Not only this, the summer camps keep the child “fit as a fiddle” by imparting lessons in yoga, cricket, tennis and swimming.
2. With changing times and trends parents have become productivity oriented. They want their children to learn through productive play unlike in the past when play was just play. Today, the parents want to tap the potential of their children to the fullest. To achieve this aim, the summer camps afford an ideal opening for children to develop their hobbies and talents. The importance of creative play is often underestimated whereas the fact is that art and craft projects can excite even a young child’s imagination and promote a sense of great achievement? The little things that children make and take home give them a sense of achievement and pride when they show them to their parents.

3. Summer camps develop a child's confidence and his ideas. They also encourage children to do things on their own. The camps are beneficial for hyper-active and aggressive children as they help to channel their energies fruitfully by drawing out the best in them. They also promote mutual understanding among teachers and children. This provides a good experience for a better future - a future of confidence.

Source : "The Young World" The Hindu

A. Now complete the following sentences briefly:

1. Students seem to be very excited after _____ . 1
2. Summer camps that are held for four to five weeks involve _____ and _____ . 1
3. Parents have become productivity oriented which means that _____ . 1
4. By promoting mutual understanding among teachers and students, summer camps _____ . 1
5. The importance of creative play should not be overlooked because _____ . 2
6. Hyper-active and aggressive children also get benefited by such camps as _____ . 2

B. Find the words from the above passage which mean the same as the following:

$\frac{1}{2} \times 2 = 1$

1. art of folding paper to make attractive objects (para 1)
2. Behaving in an angry and violent way towards another person (para 3)

C. Find words from the above passage that mean the opposite of the following: $\frac{1}{2} \times 2 = 1$

1. Demote (Para 2)
2. Quiet/Lazy (Para 3)

2. Read the Poem carefully and fill in the blanks with one word from the poem. 5

Who is Disabled?

If you fail to see the person
But only see the disability.
Then who is blind?
If you cannot hear
Your brother's
Cry for justice.
Who is deaf?
If you do not communicate
With your sister
but separate her from you.
Who is the mentally handicapped?
If you do not stand up

for the rights of all persons.

Who is the crippled?

Your attitude

Towards persons with disabilities

may be your biggest handicap.

A truly blind person according to the poet, is one who does not (a) _____ the other person but only his (b) _____. He says that the person who does not stand up for the rights of others is in the real sense a (c) _____. The poet finds our (d) _____ towards persons with disabilities to be our biggest (e) _____. 1×5=5

3. Read the following passage carefully :

5

Nainital is glorious hill station for tourism in Uttaranchal. It is 336 kms from Delhi which was discovered by Lord Barron, a Britisher in 1841. It is surrounded by mountains on three sides. The first one is Naina (2615 metres) the second is Deopatha (2438 metres) and the third is Ayarpatha (2278 metres). Naina is the highest mountain among the three. From the sea-level, Nainital MU station is located at a height of 6,350 feet. In winter Nainital has freezing cold temperature falling below zero degrees centigrade. Every year during December to February Nainital hill station gets its annual snowfall. Summer season is also very cold in Nainital. The highest temperature is not more than 26 degree centigrade. So most tourists prefer to come at summer season to explore Nainital.

Nainital is named after its beautiful lake Naini and is the base for tourism here. This lake is called Naini because it appears as if it is eye shaped. This lake is famous among the visitors, tourists and nature lovers for yachting and boating.

The southern end area of the lake is called Tallital and the northern end area is called Mallital. Both the areas have pretty cottages, luxurious hotels, villas, restaurants, food zones, shopping centres, game parlours and luxury shops.

Naina peak, which is also known as Cheena Peak is the most favourite picnic spot of Nainital. Its height is 2612 metres. It is 6 km far from Nainital. We can easily view the snow garbed Himalayas, Nainital city and its surrounding localities. Naina Devi Temple is situated on the northern shore of Naini lake. The presiding Goddess of this temple is "Maa Naina Devi".

Answer the following questions by choosing the correct option from the options given below:

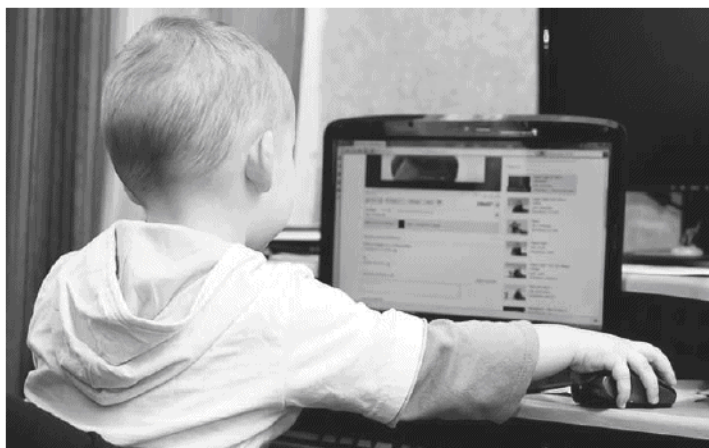
- (a) Naina is the highest among the three mountains that surround Nainital from three sides. The height of this mountain is
- | | |
|-------------------|------------------|
| (i) 2438 metres | (ii) 2615 metres |
| (iii) 2278 metres | (iv) 2805 metres |
- (b) Nainital hill station gets its annual snowfall during
- | | |
|---------------------------|---------------------------|
| (i) November to January | (ii) December to February |
| (iii) December to January | (iv) January to March |

5. Article for your school magazine in about 150 words on the harmful effect of pollution and suggest a few ways to control it. You may refer to unit Nature of My English Reader along with your own ideas. 8

OR

You are Vnnshika/Vansh, You are very worried after seeing the pollution level in your city especially after Diwali. Schools are closed, and people are using masks. You decide to write an article for your school magazine in about 150 words. You may use the ideas given in unit Nature of My English Reader along with your Ideas, line importance of sports and games is being increasingly recognized in India, from both the educational and social points of view, As Mishti/Ish write an article in about 150 words on 'The Importance of Sports and Games in a Student's Life'.

6. You are Devansh/Devanshi. You feel quite concerned to see the Children of today spending a lot of their time surfing the internet, accessing prohibited sites and misusing the gift of science. You decide to write a letter in 150 words to the Editor of a National Newspaper expressing your concern on the misuse of the internet and drawing the attention of the parents to guide and monitor their children. Refer to the picture given below. 8



SECTION – C [Grammar]

15 Marks

7. Given below are some notes in the box, read them to complete the paragraph. Write the answers against the correct blank numbers.

UDBI robbed- hold the employees at pistol point- watchman shot at - a customer alerts police. - Culprits leave with cash.

The urban Development Bank of India Kishan Nagar branch (a) _____ According to Mr. R.L Sharma, the Manager four men entered the bank and (b) _____ at pistol

point. Rajan, the watchman (c) _____ when he tried to prevent them. A customer alerted the police, but before they reached the culprits had left with the cash. $1 \times 3 = 3$

8. The following passage has not been edited. There is an error in each of the lines, against which a blank is given. Write the incorrect word and the correction in your answer sheet against the correct blank number. $\frac{1}{2} \times 6 = 3$

		Incorrect	Correct
Women who are fond for beauty products are in for a shocks.	e.g.	for	of
The recent study says that many beauty products can causing birth defects by damage the human reproductive system. Stickers bindis should cause white patches on the forehead.	(a)
	(b)
	(c)
	(d)
	(e)
	(f)

9. Look at the words and phrases given below. Rearrange them into meaningful sentences as given in the example. $1 \times 3 = 3$

by / childhood / are / memories / everyone / cherished
 Childhood memories are cherished by everyone.

- (a) childhood / generally / I / as being / rember / my / happy.
 (b) free / some of / recall / my / i / can / times.
 (c) frightening / remember / I / can / moments / also / my

10. Given below is a set of instructions for issuing a book from the library of your school. Read the instructions carefully complete the paragraph by choosing the correct answer from the options provided. $1 \times 3 = 3$

Instructions :

- Go to the library with your library card.
- Select the book of your choice.
- Take the book to the library counter.
- Give the book to the counter clerk.
- Get the book issued.

If you want to issue a book from your school library the library card is taken for entering the library. The book of your choice (a) _____. The selected book is then taken to the library counter and (b) _____ . to the counter clerk. The book (c) _____ by the counter clerk.

- (a) (i) are selected (ii) is selected
 (iii) is select (iv) was selected
 (b) (i) are given (ii) was given
 (iii) is given (iv) is gave

- (c) (i) is issued (ii) will be issued
(iii) was issued (iv) is issuing

11. My parents had promised me (a) _____ (that / and / but) they would buy me a motor bike (b) _____ (before / if / because) I passed the final examination (c) _____ (or / which / this) T knew was not difficult (d) _____. (and / but / Therefore) I wanted to show them (e) _____ (that / as / so that) I cared for their feelings. They had great confidence in my capability (f) _____ (but / or / and) I did what my parents had wished.

$\frac{1}{2} \times 6 = 3$

SECTION – D [Literature]

25 Marks

12. Read the following extract and answer the questions that follow. Write the correct option in your answer sheets. **1 × 4 = 4**

Some like the flame of her marriage fire,
Or rich with the hue of her heart's desire

- (a) Name the poem and the poet
(i) 'Bangle Sellers' by 'Sarojini Naidu'.
(ii) 'Bangle Sellers' by 'Ruskin Bond'.
(iii) Children's Song by Alexander Pope
(iv) 'Couplets' by Sarojini Naidu
- (b) 'her' in the above lines refers
(i) the young girl (ii) the bride
(iii) the poetess (iv) the middle aged woman
- (c) Name the figure of speech used in the 2nd line.
(i) simile (ii) metaphor
(iii) alliteration (iv) personification
- (d) Which colour appropriately describes 'her heart's desire'?
(i) orange (ii) purple
(iii) red (iv) blue

13. Read the following extract and answer the questions that follow. Write the correct option in your answer sheet. **1 × 4 = 4**

Land of our Birth, we pledge to thee
Our love and toil in the years to be.
When we are grown and take our place
As men and women with our race

- (a) 'We' in the above extract stands for
(i) the bonafide citizens of the country
(ii) all those who have migrated to this country

- (iii) men & women of the country
- (iv) the children of the country
- (b) 'In the years to be means
 - (i) in times to come (ii) on yearly basis
 - (iii) in the past (iv) when months turn into years
- (c) When would 'we' fulfil the pledge?
 - (i) on running a race with men and women
 - (ii) on becoming adults
 - (iii) when we are ready for the race
 - (iv) when we take responsibility as men & women
- (d) The word 'toil' in the second line means.
 - (i) to labour / work continuously; exhausting labour on effort.
 - (ii) to work halfheartedly
 - (iii) to make friendship
 - (iv) to sit idle

14. Answer any four of the following questions in 30-40 words each.

2×4=8

- (a) Mention the grievances the staff members had against Mr. Hill.
- (b) When the narrator was invited by the district officer to see him, his friends said it was an insult to him. Explain.
- (c) How can you say that it is foolish to 'contest' for the forms of government? (Couplets)
- (d) Describe Mr. Regnier's reaction on learning that the ring had been found.
- (e) What idea do you get about the children who are singing 'The Children's Song'?

15. Value based Questions (Answer in 30-40 words)

2×2=4

- (a) It is said Presence of mind keeps a person alert about the things around and saves him from difficult situations. Comment (The Case of the Sharp Eyed Jeweller)
- (b) Mention the virtues, you think, the children should adopt to serve their motherland. Mention any four.

- 16.** Imagine you are the narrator, your conscience pricks you for having accepted the undeserved credit of getting Baldev's son acquitted / released. Write a % letter to Baldev expressing your guilt over accepting the honour that you did not deserve. (Word limit 80-90). **5**

OR

Imagine you are Mrs. Hill. Write a diary page expressing your relief at George's changed attitude and his decision to retain Annie in the job. (Word limit 80-90)